



Ridgemont EQUITY
PARTNERS™

Partnering to Build Market Leaders



ridgemontep.com

 **Ridgemont** EQUITY PARTNERS™

Leadership

Rob Edwards
Jack Purcell
John Shimp
Walker Poole

Partners

Charles Anderson
Anthony Cassano
Tim Dillon
Laura Fahrney
Dan Harknett
Matt Ibbetson
Ryan Jack
Justin Lay
Kelly Lineberger

Principals / VPs

Colin Gale
John Grenier
Eric Langerman
Petri Lindberg
Michael Mandl
Adam Brawley
Will Dull
Mason Huss
Dan Norton
Tom Polak
Sam Poole
Andrew Schultz
Tessa Shakon
Ryan Shanahan

Senior Associates / Associates

Kate Carrington
Connor Koester
Pete Thompson
Teddy Carnes
Jack Cook
Gordon Cory
Charles Dannacher
Connor DeMaine
Alex Garcia
Alston Hackney
Ladd Harrison
Cole McPheeters
Ned Mize
Annie Pearson
Carter Walters

Finance & Firm Operations

Ed Balogh
Jane Caldwell
John Chirokas
Curtis Jones
Scott Millikan
Angus Brown
Karen Moore
Quinn Carmean
Olivia Mullens
Tina Carson
Dara Metcalf
Emily Cochran
Abigail Buckner
Abi Adams
Amber Brennan
Britany Crosby
Beth Decker
Erica Walters

Senior Advisors

Donny Harrison
George Morgan
Trey Sheridan

WHO WE ARE

Ridgemont Equity Partners is a Charlotte-based middle market private equity firm that has provided buyout and growth capital to industry-leading companies in the business and tech-enabled services, industrial growth, and healthcare sectors for three decades. The principals of Ridgemont have refined a proven, industry-focused model designed to build distinctive middle market companies.

OUR HISTORY

>200 YEARS	165+ INVESTMENTS	\$7+ BILLION	\$2.35 BILLION
Collective Investing Experience	Since 1993	Assets Under Management	Current Flagship Fund

*Estimated as of June 30, 2024

OUR MISSION

Consistently deliver attractive, risk-adjusted returns as a preferred partner to our long-term investors, trusted relationships, and Ridgemont teammates

OUR CORE VALUES

Support the Ridgemont Family
Communicate Transparently
Play as a Team
Work Hard and Celebrate Success

COLLABORATIVE PARTNERS

Track record of building market leaders alongside entrepreneurs.



*A nominal fee was paid to submit Ridgemont's application to be eligible for inclusion.

Proud signatory of the Institutional Limited Partners Association (ILPA) initiative to advance DEI in the industry



Founding member of the Gender Equity Consortium

INVESTMENT CRITERIA

Majority ownership or lead minority investor

Equity for organic or acquisition growth

Transactions involving full or partial liquidity in private companies or corporate divestitures

Service and distribution business models

SIZE
**\$100mm-
\$1b+** ENTERPRISE VALUE

UP TO **\$500** MILLION EQUITY COMMITMENTS

GEOGRAPHY
North America

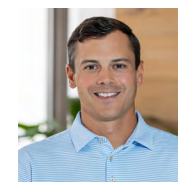
SECTOR FOCUSED INVESTING

BUSINESS & TECH
ENABLED SERVICES

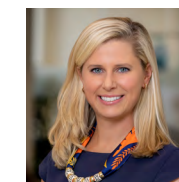
INDUSTRIAL
GROWTH

HEALTHCARE

ORIGINATION AND CAPITAL MARKETS For new investment opportunities, contact:



JUSTIN LAY
Partner
704.945.2106
jlay@ridgemontep.com



KELLY LINEBERGER
Partner
704.944.0935
klineberger@ridgemontep.com



SAM POOLE
Vice President
704.944.0933
sam.poole@ridgemontep.com



ABIGAIL BUCKNER
Marketing Coordinator
704.944.0944
abuckner@ridgemontep.com

BUSINESS & TECH-ENABLED SERVICES

Supply Chain Complexity & Velocity

Proprietary or Customized Technology as a Differentiator

Digitization & Automation of Manual Processes to Drive Efficiencies

Human Capital Solutions

Ed-tech, Training & Certification

Third-Party Logistics

Software in Select End Markets

B2B Food Supply Chain Services

SELECT INVESTMENTS (ACTIVE)⁽¹⁾



Certus is a leading professional training and certification platform that provides content, simulations, and compliance solutions for regulated end-markets through its suite of brands and companies.



eShipping is a leading, tech-enabled, non-asset based provider of managed transportation services to mid-sized shippers.



HealthMark provides software and tech-enabled services related to the management of medical records and information. The company's services help minimize the administrative burden associated with patient check-in, form completion and signing, and compliant medical record release.



Northstar is an asset-light provider of sustainability-oriented managed waste and recycling solutions to leading food, consumer packaged goods, and other industrial clients.



Omni Logistics is a leading provider of global third party logistics services, including freight forwarding, eCommerce fulfillment and other value-added supply chain services.



RoadOne is a leading provider of intermodal logistics solutions, including port and rail container drayage, terminal operations, dedicated truckload solutions, transloading and warehousing and distribution.



SEKO Logistics is a leading provider of global third party logistics services, including freight forwarding, eCommerce fulfillment and other value-added omnichannel and white glove logistics services.



smartShift is a leading tech-enabled services provider for SAP custom application migrations, upgrades and transformations.



Softdocs is a leading provider of enterprise content management software to the higher education and K-12 markets.

S P A R U S

Sparus is a leading provider of end-to-end outsourced field and professional services for utility and industrial customers.



Teachers of Tomorrow leverages technology to provide digital training, vocational certification, and placement services for K-12 teachers, along with professional development resources to support teachers' careers.

SELECT INVESTMENTS (ACTIVE)⁽¹⁾



Worldwide Express is a leading provider of third party logistics services, including a small parcel, LTL, FTL, and air freight shipping services to small and medium-sized businesses through a national presence of company-owned and franchise locations. In 2021, Ridgemont reinvested in a transaction that combined Worldwide Express with GlobalTranz Enterprises.

SELECT INVESTMENTS (EXITED)



Amerit Fleet Solutions provides repair and maintenance services for vehicle fleet owners and operators across North America, operating via a collection of mobile repair units, branch locations, and on-site customer locations.



Aurora is a leading distributor of aftermarket and replacement semi-trailer parts and accessories based outside Indianapolis, IN.



Backstage is the leading digital career marketplace for performing artists and content creators.



Ceridian is a human resource solutions company that provides a suite of products, including payroll, compensation, employee benefits administration, staffing, compliance, and HR administration.



Clean Earth offers contaminated soil, dredge sediments, and other non-hazardous materials processing and disposal services.



Dickinson Fleet Services provides repair, maintenance and technology-enabled fleet management services for vehicle fleet owners and operators across the United States, utilizing a network of mobile technicians and branch locations.



Explorer is a leading provider of back-office application software to the construction and homebuilding industries throughout North America and the UK.



NTG is a leading provider of third party logistics services focused primarily on freight brokerage.



ServiceMaster is a leading provider of residential and commercial services including lawn care and landscape maintenance, termite and pest control, and home warranties.



SMG provides customer experience, employee engagement, and brand research software solutions and services to clients in the restaurant, retail, grocery, convenience, travel and entertainment, professional services, and healthcare industries.



Simpleview is the leading provider of software and digital marketing services to Destination Marketing Organizations.



Transportation Insight is a leading, technology-enabled third party logistics and business process outsourcing provider.



Unishippers is a leading provider of third party logistics services, including small parcel, LTL, FTL and air freight shipping services across a national franchise network to small and medium-sized businesses.



UPN specializes in providing high-capacity data communications networks and related services to schools, government, carriers, data centers and enterprise business customers. UPN currently provides service in 12 states, primarily in the Midwest U.S.



ZenFi Networks is a communications provider that designs, constructs and maintains its own fiber optic network infrastructure, allowing it to provide reliable, high bandwidth and low latency service to its enterprise, carrier and government customers.

INDUSTRIAL GROWTH

Significant Installed Base of Assets or Aging Infrastructure

Positive Outsourcing Trends with Re-Occuring Demand Profile

Environmental Impact Minimization and Resource Maximization

Value-Added Distribution

Transportation Aftermarket

Environmental, Power & Infrastructure Services

Facility & Home Services

Sustainability Projects

SELECT INVESTMENTS (ACTIVE)⁽¹⁾



Allredi is a leading North American distributor of surface preparation, abrasives, and safety products with locations throughout the U.S. and Canada.



Crete Mechanical Group is a leading provider of commercial facility and mechanical services including HVAC, electrical, plumbing and building automation to a diverse range of end markets and geographies.



Fleetpride is the largest independent distributor of aftermarket heavy duty truck and trailer parts in the United States.



Gron Fuels is a greenfield renewable diesel refinery project.



Munch's Supply is a leading wholesale distributor of heating, ventilation and air conditioning ("HVAC") equipment, parts and supplies. In 2021, Ridgemont reinvested in a transaction that combined Munch's Supply with Marcone, a leading distributor of OEM branded residential appliance repair parts.



National Power is a leading provider of value-added services related to the distribution, installation, upgrading, repair, and maintenance of AC and DC power systems, integrated backup and standby power solutions, cooling/ventilation equipment, and related infrastructure.



Northstar is an asset-light provider of sustainability-oriented managed waste and recycling solutions to leading food, consumer packaged goods, and other industrial clients.

S P A R U S

Sparus is a leading provider of end-to-end outsourced field and professional services for utility and industrial customers.



Worldwide Produce is a leading distributor of fresh fruits, vegetables, dairy products and specialty foods to restaurants, foodservice customers, and grocery stores across the western United States.

SELECT INVESTMENTS (EXITED)⁽¹⁾



Amerit Fleet Solutions provides repair and maintenance services for vehicle fleet owners and operators across North America, operating via a collection of mobile repair units, branch locations, and on-site customer locations.



Aurora is a leading distributor of aftermarket and replacement semi-trailer parts and accessories based outside Indianapolis, IN.



The Clairus Group is a leading technology-enabled provider of replacement, repair and recalibration services for automotive glass and related advanced driver assistance systems, serving vehicle owners, fleets, and insurance carriers.



Cook & Boardman is a leading specialty distributor of commercial metal and wood doors, door frames, door hardware, and related products, including access control devices and specialty products.



Dickinson Fleet Services provides repair, maintenance and technology-enabled fleet management services for vehicle fleet owners and operators across the United States, utilizing a network of mobile technicians and branch locations.



J.A.M. is a distributor of lubricants, fuel, base stock, and ancillary products for the industrial, commercial vehicle, passenger vehicle, and marine end markets throughout the state of Texas.



J5 Infrastructure Partners, through Cortel and TowerCom, performs site acquisition, leasing, permitting, zoning, structural engineering, utility coordination and equipment installation services directly to all four of the top wireless carriers in the U.S. as well as tower and other infrastructure owners and state and local governments.



TransDigm engages in the design, production, and supply of aircraft components for use in commercial and military aircraft worldwide.



UPN specializes in providing high-capacity data communications networks and related services to schools, government, carriers, data centers and enterprise business customers. UPN currently provides service in 12 states, primarily in the Midwest U.S.



Zenfi Networks is a communications provider that designs, constructs and maintains its own fiber optic network infrastructure, allowing it to provide reliable, high bandwidth and low latency service to its enterprise, carrier and government customers.



HEALTHCARE

Aging Demographics and Cost Reduction Driving Market Tailwinds

Provider Consolidation

Heightened Awareness of Mental Health

Shift Towards Cloud-Based Tech Platforms & Interoperability across Systems

Physician Services

Behavioral Health

Post-Acute Care

Healthcare IT

Supply Chain Solutions

Pharma Services

Payor Services

SELECT INVESTMENTS (ACTIVE)⁽¹⁾



Agape Care Group

Agape Care Group is a leading provider of hospice services in South Carolina and Georgia.



AOM Infusion

American Outcomes Management is a leading provider of specialty infusion services.



Anne Arundel Dermatology

Anne Arundel Dermatology is a leading provider of dermatological services in the Mid-Atlantic and Southeastern U.S.



HealthMark Group

HealthMark provides software and tech-enabled services related to the management of medical records and information. The company's services help minimize the administrative burden associated with patient check-in, form completion and signing, and compliant medical record release.



HemaSource

HemaSource is the leading technology-enabled distributor of medical products to the plasma collection industry.



Medicus Healthcare Solutions

Medicus Healthcare Solutions is a leading technology-enabled talent marketplace that connects health systems and medical groups to physicians and other advanced practitioners.



Perimeter Healthcare

Perimeter Healthcare provides mental and behavioral health services in a variety of settings, including inpatient psychiatric hospitals, residential treatment centers and outpatient clinics.



SUNVERA GROUP

Sunvera Group is a management services organization providing ophthalmology services across multiple subspecialties.

SELECT INVESTMENTS (ACTIVE)⁽¹⁾



unison THERAPY SERVICES

Unison Therapy Services is a multidisciplinary industry leader that provides evidence-based, family-first therapies to children with autism and other developmental disabilities.

SELECT INVESTMENTS (EXITED)⁽¹⁾



ALLIED 100 LLC

Allied 100 is a leading provider of products and services to the automated external defibrillator marketplace.



AMN Healthcare

AMN Healthcare Services provides healthcare staffing and management services in the United States.



eviCore healthcare

eviCore is a leading benefit management company, formed through the merger of CareCore National and MedSolutions in 2014.



gallus

Gallus Biopharmaceuticals is a premier biologics contract manufacturing organization based in St. Louis, MO, which operates an FDA-approved, commercially-certified facility.



Interim HEALTHCARE

Interim HealthCare provides home care and medical staffing services in the United States.



Kendle

Kendle International is a clinical research organization that provides Phase I-IV clinical development services on a contract basis to the biopharmaceutical industry worldwide.



NATIONAL SEATING & MOBILITY

National Seating and Mobility is the nation's largest independent provider of specialized rehabilitation equipment and wheelchairs for severely physically challenged individuals.



OrthoNet

OrthoNet is a leading benefit management company specializing in orthopedics.



SP Pharmaceuticals

SP Pharmaceuticals manufactures liquid or lyophilized parenteral products. SP Pharmaceuticals was acquired by Cardinal Health, Inc.









VWR INTERNATIONAL

VWR International distributes scientific supplies, chemicals, and equipments primarily in North America and Europe.



SELECT ACTIVE INVESTMENTS

SELECT ACTIVE INVESTMENTS ⁽¹⁾

 Agape Care Group Hospice Services	 ALLREDI Specialty Distribution	 AOM Infusion <small>Improving Health, Enhancing Life</small> Specialty Infusion Services	 Anne Arundel DERMATOLOGY Dermatology Services	 CERTUS Online Training	
 CRETE MECHANICAL GROUP Facility & Mechanical Services	 eShipping Third-Party Logistics	 FleetPride <small>Heavy Duty Experts</small> Specialty Distribution	 GRÖN FUELS, LLC Renewable Diesel	 HEALTHMARK GROUP Healthcare IT	 HemaSource Specialty Distribution
 medicus <small>healthcare solutions</small> Healthcare Talent Marketplace	 MUNCH'S SUPPLY m Specialty Distribution	 NORTHSTAR RECYCLING Environmental & Facility Services	 OmniLogistics <small>ALL IN.</small> Third-Party Logistics	 NATIONAL POWER <small>We Deliver Reliability and Resilience.</small> Infrastructure Services	
 Perimeter Healthcare <small>Integrated Behavioral Care</small> Behavioral Health	 RoadOne <small>Intermodal Logistics</small> Third-Party Logistics	 SEKO Third-Party Logistics	 smartShift Technology Services	 Softdocs EdTech	 S P A R U S Utility Services
 SUNVERA GROUP Ophthalmology Services	 TEACHERS of TOMORROW Online Training	 unison <small>THERAPY SERVICES</small> Behavioral Health	 WORLDWIDE EXPRESS <small>Freight driven by technology.</small> Third-Party Logistics	 WORLDWIDE PRODUCE Specialty Distribution	

Disclaimer: The information above is not directed at prospective investors in any jurisdiction. This presentation of information does not constitute the provision of investment, tax, legal or other professional advice. Prospective investors should not rely on any of this information to make any investment decision and should, in consultation with their professional advisors, review only formal offering materials in connection with any investment. Nothing in this presentation should be considered an offer of securities or the solicitation of an offer to acquire securities in any vehicle managed by us or in any other issuer.

(1) The select investments are representative of Ridgemont's current investment criteria. Please visit ridgemontep.com to view our investment criteria and a list of all historical investments.



ridgemontep.com

Ridgemont EQUITY PARTNERS™



ridgemontep.com



CHARLOTTE OFFICE
101 S Tryon Street
Suite 3400
Charlotte, NC 28280
704.944.0914