



Ridgemont EQUITY
PARTNERS™

Partnering to Build Market Leaders



ridgemontep.com

 **Ridgemont** EQUITY PARTNERS™

Leadership

Jack Purcell
John Shimp
Rob Edwards
Walker Poole

Partners

Charles Anderson
Anthony Cassano
Tim Dillon
Laura Fahrney
Dan Harknett
Matt Ibbetson
Ryan Jack
Justin Lay
Kelly Lineberger

Principals / VPs

Colin Gale
John Grenier
Eric Langerman
Michael Mandl
Dan Norton
Ryan Shanahan
Adam Brawley
Will Dull
Mason Huss
Tom Polak
Sam Poole
Andrew Schultz
Tessa Shakon

Senior Associates / Associates

Connor Koester
Kate Murray
Pete Thompson
Carter Walters
Teddy Carnes
Jack Cook
Charles Dannacher
Connor DeMaine
Alex Garcia
Alston Hackney
Sarah Hardy
Ladd Harrison
Cole McPheeters
Ned Mize
Annie Pearson

Finance & Firm Operations

Jane Caldwell
Angus Brown
Curtis Jones
Karen Moore
Scott Millikan
Quinn Carmean
Olivia Mullens
Tina Carson
Dara Metcalf
Emily Cochran
Abigail Buckner
Amber Brennan
Britany Crosby
Beth Decker
Erica Walters
Abi Adams

Senior Advisors

Ed Balogh
Donny Harrison
George Morgan
Trey Sheridan

WHO WE ARE

Ridgemont Equity Partners is a Charlotte-based middle market private equity firm that has provided buyout and growth capital to industry-leading companies in the business services, industrials, and healthcare sectors for three decades. The principals of Ridgemont have refined a proven, industry-focused model designed to build distinctive middle market companies.

OUR HISTORY

>200 YEARS	165+ INVESTMENTS	\$8+ BILLION	\$2.35 BILLION
Collective Investing Experience	Since 1993	Assets Under Management	Current Flagship Fund

*Estimated as of December 31, 2024

OUR MISSION

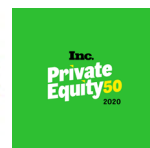
Consistently deliver attractive, risk-adjusted returns as a preferred partner to our long-term investors, trusted relationships, and Ridgemont teammates

OUR CORE VALUES

Support the Ridgemont Family
Communicate Transparently
Play as a Team
Work Hard and Celebrate Success

COLLABORATIVE PARTNERS

Track record of building market leaders alongside entrepreneurs.



*A nominal fee was paid to submit Ridgemont's application to be eligible for inclusion.

Proud signatory of the Institutional Limited Partners Association (ILPA) initiative to advance DEI in the industry



Founding member of the Gender Equity Consortium

INVESTMENT CRITERIA

Majority ownership or lead minority investor

Equity for organic or acquisition growth

Transactions involving full or partial liquidity in private companies or corporate divestitures

Service and distribution business models

SIZE
**\$100mm-
\$1b+** ENTERPRISE VALUE

UP TO **\$500** MILLION EQUITY COMMITMENTS

GEOGRAPHY
North America

SECTOR FOCUSED INVESTING



BUSINESS SERVICES



INDUSTRIALS

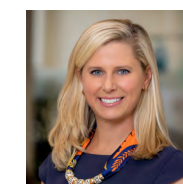


HEALTHCARE

ORIGINATION AND CAPITAL MARKETS For new investment opportunities, contact:



JUSTIN LAY
Partner
704.945.2106
jlay@ridgemontep.com



KELLY LINEBERGER
Partner
704.944.0935
klineberger@ridgemontep.com



SAM POOLE
Vice President
704.944.0933
sam.poole@ridgemontep.com



ABIGAIL BUCKNER
Marketing Coordinator
704.944.0944
abuckner@ridgemontep.com

BUSINESS SERVICES

Human Capital Solutions

Tech Services

Third-Party Logistics

SELECT INVESTMENTS (ACTIVE)⁽¹⁾



Certus is a leading professional training and certification platform that provides content, simulations, and compliance solutions for regulated end-markets through its suite of brands and companies.



eShipping is a leading, tech-enabled, non-asset based provider of managed transportation services to mid-sized shippers.



HealthMark provides software and tech-enabled services related to the management of medical records and information. The company's services help minimize the administrative burden associated with patient check-in, form completion and signing, and compliant medical record release.



Northstar is an asset-light provider of sustainability-oriented managed waste and recycling solutions to leading food, consumer packaged goods, and other industrial clients.



Omni Logistics is a leading provider of global third party logistics services, including freight forwarding, eCommerce fulfillment and other value-added supply chain services. Forward Air combined with Omni Logistics in January 2024.



RoadOne is a leading provider of intermodal logistics solutions, including port and rail container drayage, terminal operations, dedicated truckload solutions, transloading and warehousing and distribution.



Strata Information Group is a leading provider of technology services to higher education institutions.



smartShift is a leading tech-enabled services provider for SAP custom application migrations, upgrades and transformations.



Softdocs is a leading provider of enterprise content management software to the higher education and K-12 markets.



Teachers of Tomorrow leverages technology to provide digital training, vocational certification, and placement services for K-12 teachers, along with professional development resources to support teachers' careers.



Worldwide Express is a leading provider of third party logistics services, including a small parcel, LTL, FTL, and air freight shipping services to small and medium-sized businesses through a national presence of company-owned and franchise locations. In 2021, Ridgmont reinvested in a transaction that combined Worldwide Express with GlobalTranz Enterprises.

SELECT INVESTMENTS (EXITED)



Amerit Fleet Solutions provides repair and maintenance services for vehicle fleet owners and operators across North America, operating via a collection of mobile repair units, branch locations, and on-site customer locations.



Aurora is a leading distributor of aftermarket and replacement semi-trailer parts and accessories based outside Indianapolis, IN.



Backstage is the leading digital career marketplace for performing artists and content creators.



Ceridian is a human resource solutions company that provides a suite of products, including payroll, compensation, employee benefits administration, staffing, compliance, and HR administration.



Clean Earth offers contaminated soil, dredge sediments, and other non-hazardous materials processing and disposal services.



Dickinson Fleet Services provides repair, maintenance and technology-enabled fleet management services for vehicle fleet owners and operators across the United States, utilizing a network of mobile technicians and branch locations.



Explorer is a leading provider of back-office application software to the construction and homebuilding industries throughout North America and the UK.



NTG is a leading provider of third party logistics services focused primarily on freight brokerage.



SEKO Logistics is a leading provider of global third party logistics services, including freight forwarding, eCommerce fulfillment and other value-added omnichannel and white glove logistics services.



ServiceMaster is a leading provider of residential and commercial services including lawn care and landscape maintenance, termite and pest control, and home warranties.



SMG provides customer experience, employee engagement, and brand research software solutions and services to clients in the restaurant, retail, grocery, convenience, travel and entertainment, professional services, and healthcare industries.



Simpleview is the leading provider of software and digital marketing services to Destination Marketing Organizations.



Transportation Insight is a leading, technology-enabled third party logistics and business process outsourcing provider.



Unishippers is a leading provider of third party logistics services, including small parcel, LTL, FTL and air freight shipping services across a national franchise network to small and medium-sized businesses.



UPN specializes in providing high-capacity data communications networks and related services to schools, government, carriers, data centers and enterprise business customers. UPN currently provides service in 12 states, primarily in the Midwest U.S.



ZenFi Networks is a communications provider that designs, constructs and maintains its own fiber optic network infrastructure, allowing it to provide reliable, high bandwidth and low latency service to its enterprise, carrier and government customers.



INDUSTRIALS

Environmental, Power & Infrastructure Services

Facility & Home Services

Specialty Distribution

Transport Aftermarket

SELECT INVESTMENTS (ACTIVE)⁽¹⁾



Allredi is a leading North American distributor of surface preparation, abrasives, and safety products with locations throughout the U.S. and Canada.



Crete Mechanical Group is a leading provider of commercial facility and mechanical services including HVAC, electrical, plumbing and building automation to a diverse range of end markets and geographies.



Fleetpride is the largest independent distributor of aftermarket heavy duty truck and trailer parts in the United States.



Munch's Supply is a leading wholesale distributor of heating, ventilation and air conditioning ("HVAC") equipment, parts and supplies. In 2021, Ridgmont reinvested in a transaction that combined Munch's Supply with Marcone, a leading distributor of OEM branded residential appliance repair parts.



National Power is a leading provider of value-added services related to the distribution, installation, upgrading, repair, and maintenance of AC and DC power systems, integrated backup and standby power solutions, cooling/ventilation equipment, and related infrastructure.



Northstar is an asset-light provider of sustainability-oriented managed waste and recycling solutions to leading food, consumer packaged goods, and other industrial clients.



Sparus is a leading provider of end-to-end outsourced field and professional services for utility and industrial customers.



Worldwide Produce is a leading distributor of fresh fruits, vegetables, dairy products and specialty foods to restaurants, foodservice customers, and grocery stores across the western United States.

SELECT INVESTMENTS (EXITED)⁽¹⁾



Amerit Fleet Solutions provides repair and maintenance services for vehicle fleet owners and operators across North America, operating via a collection of mobile repair units, branch locations, and on-site customer locations.



Aurora is a leading distributor of aftermarket and replacement semi-trailer parts and accessories based outside Indianapolis, IN.



The Clairus Group is a leading technology-enabled provider of replacement, repair and recalibration services for automotive glass and related advanced driver assistance systems, serving vehicle owners, fleets, and insurance carriers.



Cook & Boardman is a leading specialty distributor of commercial metal and wood doors, door frames, door hardware, and related products, including access control devices and specialty products.



Dickinson Fleet Services provides repair, maintenance and technology-enabled fleet management services for vehicle fleet owners and operators across the United States, utilizing a network of mobile technicians and branch locations.



J.A.M. is a distributor of lubricants, fuel, base stock, and ancillary products for the industrial, commercial vehicle, passenger vehicle, and marine end markets throughout the state of Texas.



J5 Infrastructure Partners, through Cortel and TowerCom, performs site acquisition, leasing, permitting, zoning, structural engineering, utility coordination and equipment installation services directly to all four of the top wireless carriers in the U.S. as well as tower and other infrastructure owners and state and local governments.



TransDigm engages in the design, production, and supply of aircraft components for use in commercial and military aircraft worldwide.



UPN specializes in providing high-capacity data communications networks and related services to schools, government, carriers, data centers and enterprise business customers. UPN currently provides service in 12 states, primarily in the Midwest U.S.



Zenfi Networks is a communications provider that designs, constructs and maintains its own fiber optic network infrastructure, allowing it to provide reliable, high bandwidth and low latency service to its enterprise, carrier and government customers.

HEALTHCARE

Behavioral

Outsourced Services & Distribution

Pharma Services

Post-Acute Care

SELECT INVESTMENTS (ACTIVE)⁽¹⁾



Agape Care Group

Agape Care Group is a leading provider of hospice services in South Carolina and Georgia.



AOM Infusion
Improving Health, Enhancing Life

American Outcomes Management is a leading provider of specialty infusion services.



Anne Arundel
DERMATOLOGY

Anne Arundel Dermatology is a leading provider of dermatological services in the Mid-Atlantic and Southeastern U.S.



HemaSource

HemaSource is the leading technology-enabled distributor of medical products to the plasma collection industry.



medicus
healthcare solutions

Medicus Healthcare Solutions is a leading technology-enabled talent marketplace that connects health systems and medical groups to physicians and other advanced practitioners.



Perimeter Healthcare
Integrated Behavioral Care

Perimeter Healthcare provides mental and behavioral health services in a variety of settings, including inpatient psychiatric hospitals, residential treatment centers and outpatient clinics.

SELECT INVESTMENTS (EXITED)⁽¹⁾



ALLIED
100
LLC

Allied 100 is a leading provider of products and services to the automated external defibrillator marketplace.



AMN
Healthcare

AMN Healthcare Services provides healthcare staffing and management services in the United States.



eviCore
innovative solutions
healthcare

eviCore is a leading benefit management company, formed through the merger of CareCore National and MedSolutions in 2014.



gallus

Gallus Biopharmaceuticals is a premier biologics contract manufacturing organization based in St. Louis, MO, which operates an FDA-approved, commercially-certified facility.



Interim
HEALTHCARE

Interim HealthCare provides home care and medical staffing services in the United States.



Kendle
Real people. Real results.

Kendle International is a clinical research organization that provides Phase I-IV clinical development services on a contract basis to the biopharmaceutical industry worldwide.



NATIONAL
SEATING &
MOBILITY

National Seating and Mobility is the nation's largest independent provider of specialized rehabilitation equipment and wheelchairs for severely physically challenged individuals.



OrthoNet

OrthoNet is a leading benefit management company specializing in orthopedics.



SP
Pharmaceuticals

SP Pharmaceuticals manufactures liquid or lyophilized parenteral products. SP Pharmaceuticals was acquired by Cardinal Health, Inc.



unison
THERAPY SERVICES

Unison Therapy Services is a multidisciplinary industry leader that provides evidence-based, family-first therapies to children with autism and other developmental disabilities.



VWR
INTERNATIONAL

VWR International distributes scientific supplies, chemicals, and equipments primarily in North America and Europe.





SELECT ACTIVE INVESTMENTS

SELECT ACTIVE INVESTMENTS ⁽¹⁾

 Hospice Services	 Specialty Distribution	 Specialty Infusion Services	 Dermatology Services	 Online Training
 Facility & Mechanical Services	 Third-Party Logistics	 Specialty Distribution	 Healthcare IT	 Specialty Distribution
 Healthcare Talent Marketplace	 Specialty Distribution	 Environmental & Facility Services	  Third-Party Logistics	
 Infrastructure Services	 Behavioral Health	 Third-Party Logistics	 Technology Services	 Technology Services
 EdTech	 Utility Services	 Online Training	 	 Specialty Distribution

Disclaimer: The information above is not directed at prospective investors in any jurisdiction. This presentation of information does not constitute the provision of investment, tax, legal or other professional advice. Prospective investors should not rely on any of this information to make any investment decision and should, in consultation with their professional advisors, review only formal offering materials in connection with any investment. Nothing in this presentation should be considered an offer of securities or the solicitation of an offer to acquire securities in any vehicle managed by us or in any other issuer.

(1) The select investments are representative of Ridgemont's current investment criteria. Please visit ridgemontep.com to view our investment criteria and a list of all historical investments.



ridgemontep.com

Ridgemont EQUITY PARTNERS™



ridgemontep.com



CHARLOTTE OFFICE
101 S Tryon Street
Suite 3400
Charlotte, NC 28280
704.944.0914